

1 – Student drawing of a design for a mausoleum by J.V. Downes (acc 2001/156)
(all photos by David Dawson)

Irish Architectural Archive

Accessions 2001

DAVID GRIFFIN AND COLUM O'RIORDAN

THE FOLLOWING IS A LIST OF MATERIAL ACQUIRED BY THE IRISH ARCHITECTURAL Archive in 2001. It includes material donated by a wide variety of individuals and organisations, and material purchased. It must be noted that while the Archive strives to provide access to its holdings, much of the material on this list is currently inaccessible, and will remain so until such time as it has been archivally processed, listed and indexed.

BOOKS

- 2001/001 Michael Corcoran, *Through Streets Broad and Narrow*, London 2000 (D.DUB.1.272)
Brian Dornan, *Mayo's Lost Islands: The Inishkeas*, Dublin 2000 (D.MAY.2.2)
W.A. Maguire, *A Century in Focus*, Belfast 2000 (CS.MAG.1.0)
Robert Scott, *A Breath of Fresh Air*, Belfast 2000 (D.BEL.1.33)
Lesley Whiteside, *Saint Patrick in Stained Glass*, 1997 (CS.WHI.3.0)
- 2001/003 Desmond Coakham, *The Belfast and County Down Railway*, London 1998 (CS.COA.1.0)
Tom Ferris and Patrick Flanagan, *The Cavan and Leitrim Railway – The Last Decade*, London 1997 (CS.FER.1.2)
Steve Flanders, *The County Donegal Railway*, London 1996 (CS.FLA.2.0)
Ernie Shepherd, *The Midland Great Western Railway of Ireland*, 1994 (CS.SHE.2.0)
Ernie Shepherd and Gerry Beesley, *The Dublin and South Eastern Railway*, London 1998 (CS.SHE.2.1)
John Turpin, *Oliver Sheppard 1856-1941*, Dublin 2000 (BS.SHE.1.1)

- 2001/004 David Orford (ed.), *Those Were The Days – Memories of Portarlington 1900 to 1999*, Portarlington 2000 (D.POR.3.0)
- 2001/006 John Blackwell and Frank J. Convery, *Promise and Performance*, Dublin 1983 (CS.BLA.1.1)
 donor: Ann McNicholl
 Martin Brennan, *The Boyne Valley Vision*, Portlaoise 1980 (D.BOY.1.2)
 Aodhagan Brioscú, *Irish Churches* (RP.C.85.5)
 R.A. Butlin (ed.), *The Development of the Irish Town*, New Jersey and London 1977 (CS.BUT.3.0)
 Fintan Cullen, *The Abbey Theatre 1904-1979*, Dublin 1980 (RP.D.310.7)
 J. Forde-Johnston, *Castles and Fortifications of Britain and Ireland*, London 1977 (CS.FOR.2.0)
 George Cunningham, *Burren Journey West*, Kilkenny 1980 (RP.D.309.6)
 Roderick Gradidge, *Edwin Lutyens, Architect Laureate*, London 1981 (BS.LUT.1.3)
 Michael Herity, *Irish Passage Graves*, Dublin 1974 (D.BOY.1.3)
 James Macaulay, *The Gothic Revival 1745-1845*, Glasgow and London 1975 (H.MAC.1.0)
 Eileen McCracken, *The Irish Woods Since Tudor Times*, Newton Abbot 1971 (CS.MCC.4.0)
 Seán P. Ó Riordáin, *Antiquities of the Irish Countryside*, Cork, London and New York 1979 (CS.ORI.1.0)
Restaurant Building for University College Dublin, Belfield, Stillorgan, Dublin 4, Dublin 1970 (RP.D.310.1)
University College Dublin: the Arts Building at Belfield, Dublin 1970 (RP.D.310.2)
Rural Housing in Ulster in the mid-nineteenth century, Belfast 1974 (RP.D.306.2)
Arquitectura en Capitales Europeas (1987-1991), Madrid 1992 (D.DUB.1.274)
- 2001/009 *Guide To St. Patrick's Cathedral, Armagh*, Armagh 1905 (D.ARM.1.7)
- 2001/011 Raymond Refaussé and Mary Clark, *A Catalogue of the Maps of the Estates of the Archbishops of Dublin, 1654-1850*, Dublin 2000 (D.DUB.1.273)
- 2001/014 Charles Dillon and Henry A. Jefferies (eds), *Tyrone: History and Society*, Dublin 2000 (D.TYR.2.1)
 Tom Ferris, *Irish Railways in Colour: A Second Glance, 1947-1970*, London 1995 (CS.FER.1.1)

- Tom Ferris, *Irish Railways in Colour: From Steam to Diesel, 1955-1967*, London 1995 (CS.FER.1.0)
- E.E. O'Donnell, *The Jesuits in Dublin, 1598-1998*, Dublin 1999 (D.DUB.1.268)
- 2001/018 Brian Wragg (Giles Worsley, ed.), *The Life and Work of John Carr of York*, York 2000 (BS.CAR.2.1)
donor: Oblong Books
- 2001/019 Nigel Everett, *Wild Gardens*, Cork 2000 (D.BAN.4.2)
donor: Nigel Everett
- 2001/024 John de Courcy Ireland, *History of Dun Laoghaire Harbour*, Dublin 2001 (D.DUN.1.6)
- 2001/027 J. Frederick Rankin, *Down Cathedral, The Church of Saint Patrick of Down*, Belfast 1997 (D.DOW.2.2)
- 2001/032 Frank Keohane (ed.), *Period Houses: A Conservation Guidance Manual*, Dublin 2001 (CS.KEO.1.0)
donor: Dublin Civic Trust
- 2001/038 W. de W. Abney, John G. Barton and R.W.A. Holmes, *Report of the committee appointed to inquire into the buildings and site of the Royal College of Science for Ireland, Dublin*, London, 1899 (RP.D 327.4)
- Marilyn Silverman and P.H. Gulliver, *In the Valley of the Nore*, Dublin 1986 (D.THO.1.0)
- 2001/039 John S. Powell, 'Your Humble Servant': *Notes and Letters from Portarlinton, 1692-1768*, no. 4 in series *Documents of Portarlinton*, Portarlinton, 1 January 1999 (RP.D.320.1)
- 2001/041 N.S. Baer, S. Fitz and R.A. Livingston (eds), *Conservation of Historic Brick Structures*, Dorset 1998 (H.BAE.1.0)
donor: Monuments and Buildings Record, Belfast
- 2001/042 William K. Parke, *A Fermanagh Childhood*, Belfast 1988 (D.FER.2.0)
The White House: An Historic Guide, Washington DC 1977 (BS.HOB.1.0)
- 2001/044 Joe McDermott, *St. Mary's Hospital, Castlebar*, Castlebar 1999 (D.CAS.7.0)
donor: A O' Boyle
- 2001/045 Marigold Freeman-Attwood, *Leap Castle: A Place and its People*, Norwich 2001 (D.LEA.1.2)
- 2001/046 J. Mordaunt Crook and C.A. Lennox-Boyd, *Axel Haig and the Victorian Vision of the Middle Ages*, London 1984 (BS.HAI.1.0)
- 2001/054 Fintan Cullen, Cork, *Sources in Irish Art: A Reader*, 2000 (CS.CUL.1.0)

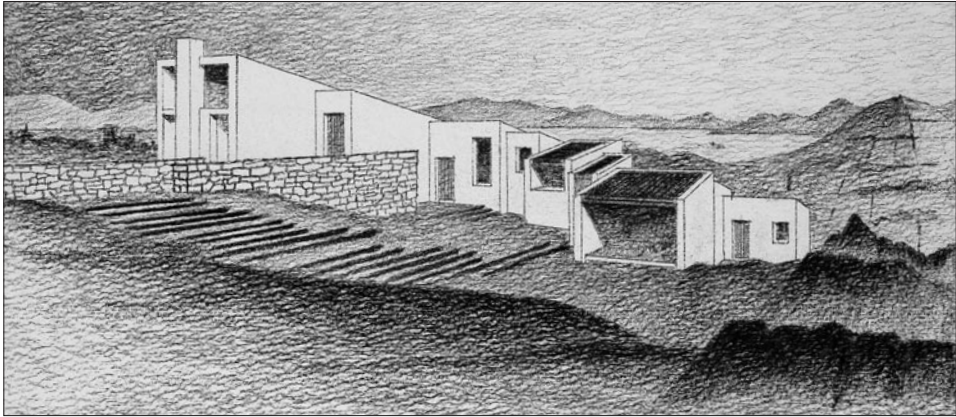
- Vincent Kinane and Anne Walsh (eds), *Essays on the History of Trinity College Library, Dublin*, Dublin 2000 (D.DUB.1.267)
- Helen Rock, Dublin, *Helen Rock's Irish Gardening*, 1999 (CS.ROC.2.0)
- 2001/055 Hazel Thurston, *South and South West Ireland*, London, Edinburgh and New York 1971 (D.MUN.1.2)
donor: David Griffin
- Kiltarnan Church, 1826-1976*, Dublin 1976 (RP.D.323.3)
- Memorial booklet for 25th anniversary of the Church of Our Lady of Mercy, Artane (opened 27 Oct 1968), Dublin 1983 (RP.D.323.2)
- 2001/057 Patrick Conlan, *Franciscan Ireland*, Mullingar 1988 (CS.CON.3.0)
- Lindsay J. Proudfoot, *Urban Patronage and Social Authority*, Washington DC 1995 (BS.DEV.2.0)
- David Seth Jones, *Graziers, Land Reform and Political Conflict in Ireland*, Washington DC 1995 (CS.SET.1.0)
- 2001/058 Penelope Durell and Cornelius Kelly (eds), *The Grand Tour of Beara*, Cork 2000 (D.BEA.1.0)
- John McVeagh, *Irish Travel Writing: A Bibliography*, Dublin 1996 (CS.MCV.1.0)
- 2001/065 Terence Dooley, *The Decline of the Big House in Ireland*, Dublin 2001 (CS.DOO.1.0)
- Kevin McCarthy, *Lighthouses of Ireland*, Florida 1997 (CS.MCC.3.0)
- James Morrissey (ed.), *On the Verge of Want*, Dublin 2001 (BS.CDB.1.0)
- Damien Noonan, *Castles and Ancient Monuments of Ireland*, London 2001 (CS.NOO.1.0)
- John O'Regan (ed.), *Works 1 – James Scanlon: Sneem*, Kinsale 1995
- Colin Rynne and Helen Guerin (eds), *The Heritage of Ireland*, Neil Buttimer, Cork 2000 (CS.BUT.2.0)
- Kenneth Wiggins, *Anatomy of a siege: King John's Castle, Limerick, 1642*, Wicklow 2000 (D.LIM.1.12)
- 2001/067 Eamonn McEaney, Dublin, *Discover Waterford*, 2001 (D.WAT.1.7)
donor: Colum O'Riordan
- 2001/074 D.M. McFarlan, *Lift thy Banner: Church of Ireland Scenes 1870-1900*, Dundalk 1990 (CS.MCF.1.0)
- 2001/075 Denis A. Cronin, Jim Gilligan and Karina Holton (eds), *Irish Fairs and Markets*, Dublin 2001 (CS.CRO.3.0)
- 2001/076 Richard T. Cooke, *My Home by the Lee*, Cork 2000 (D.COR.1.26)
- 2001/082 Michael McCarthy (ed.), *Lord Charlemont and his Circle*, Dublin 2001 (BS.CAU.1.2)
donor: Michael McCarthy

- 2001/086 Derval O'Carroll and Seán Fitzpatrick (eds), *Hoggers, Lords and Railwaymen*, Dublin 1996 (D.DUB.1.275)
donor: Custom House Docks Development Authority
- 2001/087 Cornelius F. Smith, *Newtownpark Avenue: its people and their houses*, Dublin 2001 (D.NEW.1.1)
donor: Cornelius Smith
- 2001/089 Christiaan Corlett and John Medlycott (eds), *The Ordnance Survey Letters: Wicklow*, Wicklow 2000 (D.WIC.1.3)
Michael Herity (ed.), *Ordnance Survey Letters, Dublin*, Dublin 2001 (D.DUB.1.271)
Michael Herity (ed.), *Ordnance Survey Letters, Meath*, Dublin 2001 (D.MEA.1.4)
- 2001/090 Hilary Richardson and John Scarry, *An Introduction to High Crosses*, Dublin 1990 (CS.RIC.2.0)
- 2001/095 John Joyce, *Graiguenamanagh: a town and its people*, Graiguenamanagh 2001 (D.GRA.1.0)
donor: Anne Henderson
- 2001/099 Peter B. Franz, *Jane's Letters from Ireland 1884-1886*, Durham 1999 (C.MAH.1.0)
- 2001/101 Michael J. Carroll, *The Castles and Fortified Houses of West Cork*, Bantry 2001 (D.COR.1.28)
- 2001/104 George Henry Bassett, *Kilkenny City and County: Guide and Directory*, Kilkenny 2001 (orig. 1884), (D.KIL.1.10)
- 2001/106 Art and architecture books (ex coll. Raymond McGrath)
donor: Jennifer O'Donovan
- 2001/111 Andrew and Charlotte Bonar Law, *The Irish Prints of James Malton*, Dublin 1999 (BS.MAL.2.0)
- 2001/112 Katriona Byrne, *Pearse Street, D2*, Dublin 2001 (D.DUB.1.279)
donor: Dublin Civic Group
Olwyn James, *Capel Street, D1*, Dublin 2001 (D.DUB.1.278)
- 2001/114 Philip and Delphine Geoghegan, *Building Sensitively and Sustainably in County Louth*, Dundalk 1999 (D.LOU.3.3)
Richard Hurley, *Irish Church Architecture in the Era of Vatican II*, Dublin 2001 (CS.HUR.1.1)
Seán Lennon, *Dublin Libraries: A Pictorial Record*, Dublin 2001 (D.DUB.1.281)
- 2001/117 Patricia Butler and Pat O'Kelly, *The National Concert Hall at Earlsfort Terrace, Dublin: A History*, Dublin 2000 (D.DUB.1.276)
- 2001/119 Rev W.M. O'Hanlon, *Walks Among the Poor of Belfast and Suggestion*

- for their Improvement*, Belfast 1971 (orig. 1853), (D.BEL.1.34)
 Rev R.H. Ryland, *The History, Topography and Antiquities of the County and City of Waterford*, Kilkenny 1982 (orig.1824), (D.WAT.1.8)
- 2001/123 Joseph Brady and Anngret Simms, *Dublin Through Space and Time (c.900-1900)*, Dublin 2001 (D.DUB.1.282)
- 2001/132 Kevin V. Mulligan, *Buildings of Meath*, Kells 2001 (D.MEA.1.5)
- 2001/133 Alex Findlater, *Findlater: The story of a Dublin merchant family 1774-2001*, Dublin 2001 (BS.FIN.2.0)
- Gerard J. Lyne, *The Lansdowne Estate in Kerry under the Agency of William Steuart Trench, 1849-72*, Dublin 2001 (D.KER.1.2)
- 2001/140 Glenn Hooper (ed.), *The Tourist's Gaze*, Cork 2001 (C. HOO.1.0)
- 2001/147 Seán Duffy (ed.), *Medieval Dublin II*, Dublin 2001 (D.DUB.1.259 (2))
 Emmeline Henderson, *Thomas Street, D8*, Dublin 2001 (D.DUB.1.280)
 Máire Ní Chongaile, *Camden and Wexford Street, D2*, Dublin 2001 (D.DUB.1.277)
- 2001/148 Louis Cullen (ed.), *St. Mary and St. Michael Parish Church, New Ross 1902-2002*, Dublin 2001 (D.NEW.8.0)
 donor: Louis Cullen
- 2001/150 John Hough, *Ireland's Co-Operative Heartland, Ardagh C.D.S – A History 1891-1974*, Limerick 1997 (D.ARD.2.0)
 Gerard MacAtasney, *The Dreadful Visitation*, Belfast 1997 (D.LUR.1.0)
 Jenny O'Donovan, *The Burnt Child*, Bray 1999
 Maria Wooton, *The Du Bedat Story*, Howth 1999 (D.KIL.15.0)
- 2001/151 RIBA catalogue to early printed architectural books
- 2001/157 *Aspects of Leixlip*, Leixlip 2001 (D.LEI.2.1)

DRAWINGS

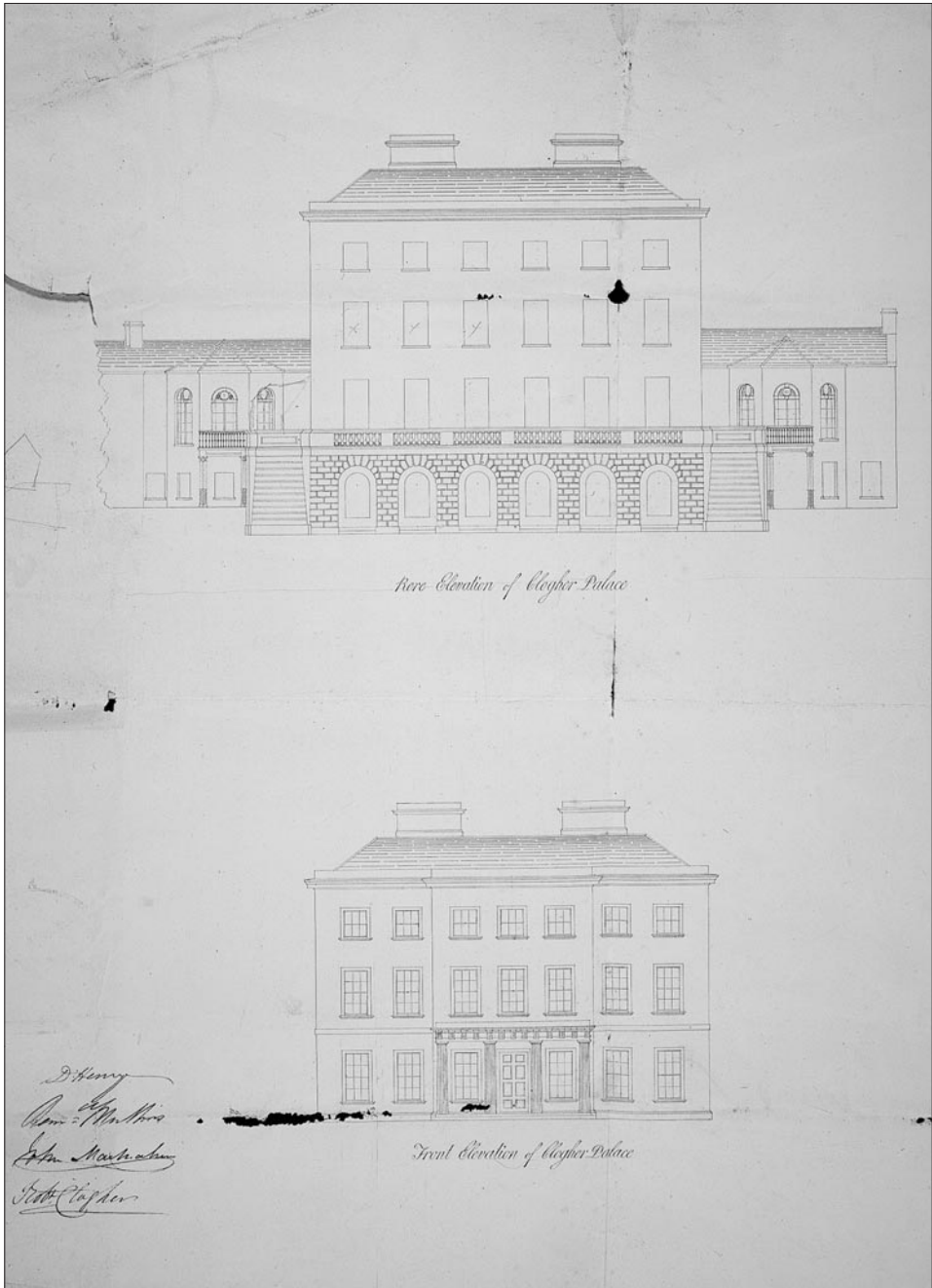
- 2001/005 Drawings of two unexecuted proposals by Robin Walker for a house at Pulleen, Cork, for Louis le Brocqy, c.1972 (Plate 2)
 donor: Dorothy Walker
- 2001/020 Carton planning application report and copy drawings by Murray O'Laoire Architects
 donor: Irish Georgian Society
- 2001/022 Lundy Collection: drawings from the offices of Henry James and Hubert Lundy
 donor: Dell Lundy



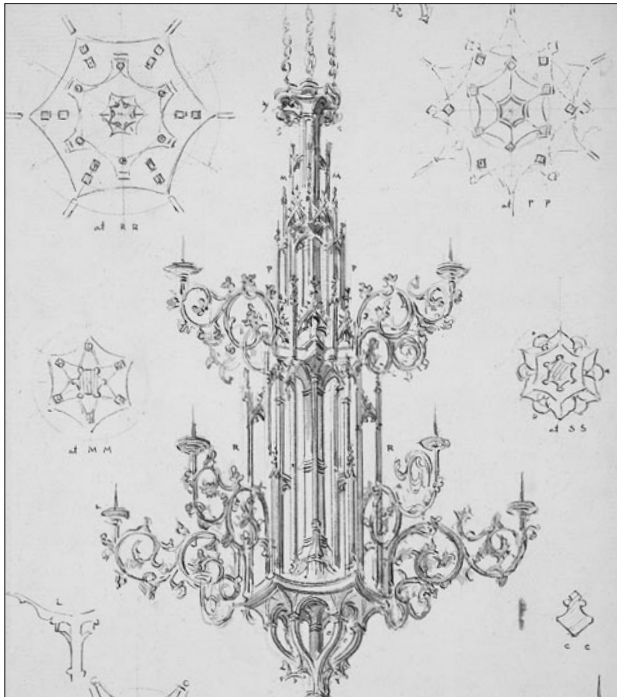
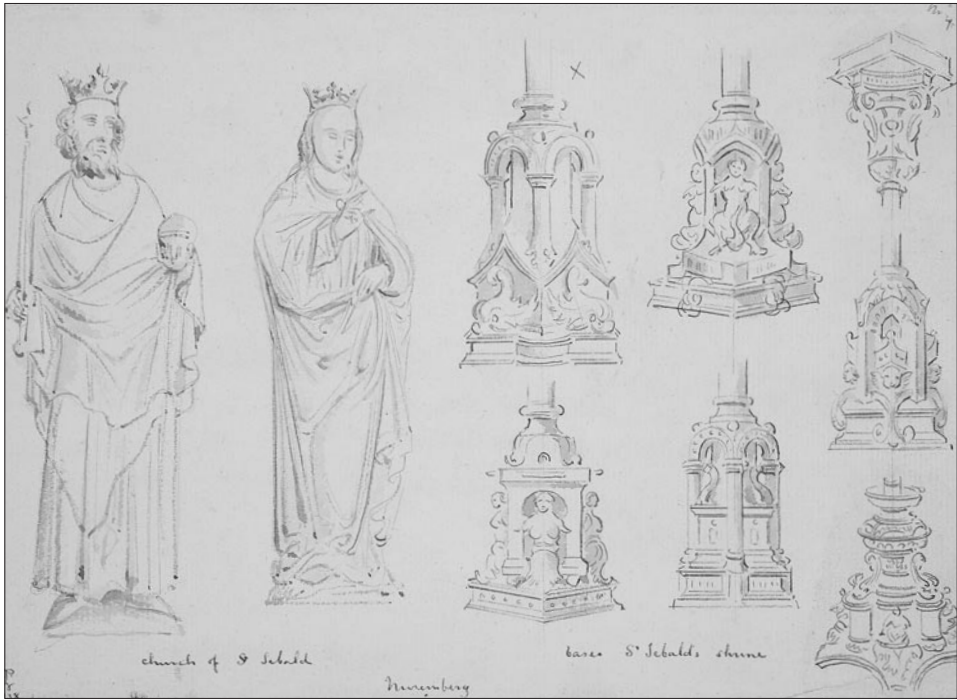
2 – Proposal by Robin Walker for a house at Pulleen for Louis le Brocquy, 1972-73 (acc. 2001/5)

- 2001/028 Collection of material relating to the Irish Sailors and Soldiers Land Trust and the Iveagh Trust, Dublin (photographs, negatives, copy drawings, reports, etc)
donor: F. Aalen
- 2001/031 Watercolour perspective view of Callan Park War Memorial, Sydney, by Raymond McGrath. 1925
donor: Aidan Powell
- 2001/033 Sketch pencil portrait of George Petrie, dated 27 August 1851 (ex Jones file on Petrie)
donor: Elizabeth Flemming
- 2001/034 Set of three drawings for proposed ferro-concrete bridge, Limerick harbour, by L.G. Mouchel & Partners, London
donor: anonymous
- 2001/050 Specifications and drawings for Presentation Convent and National School, Carrick on Suir, county Tipperary, by George C. Ashlin, 1881-82
- 2001/053 Designs of a house for Dr Lavery on Castlepark Road, Dalkey, by W.H. Byrne & Son, c.1950
donor: Peter Pearson
- 2001/072 Dye-line copy set of mechanical and electrical services drawings for Ardbracon House, county Meath, prepared by McCormick Woods Consulting Engineers, 1985-1987
donor: Robin Mandal
- 2001/073 Niall Montgomery & Partners Collection
donor: James Montgomery

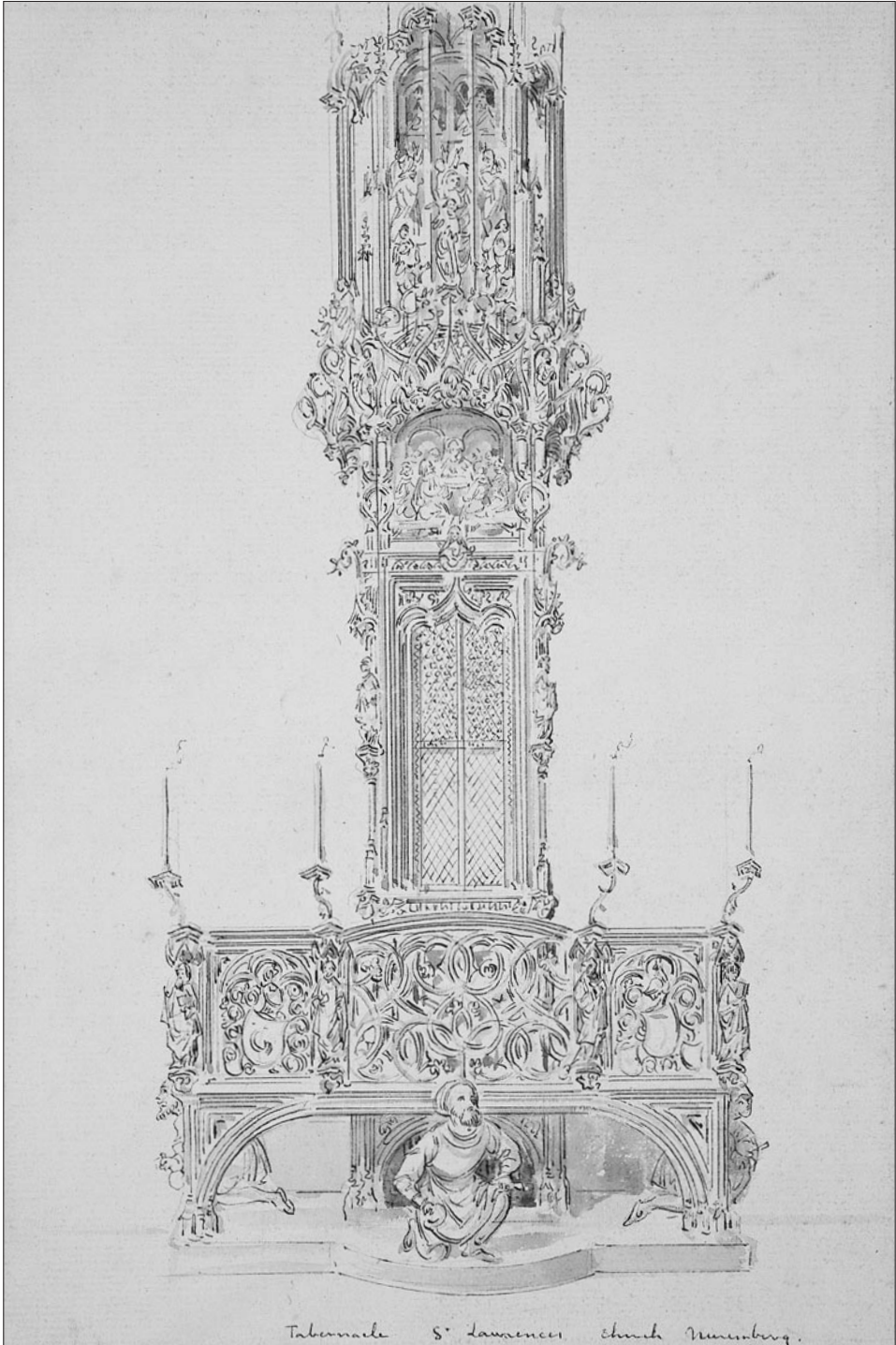
- 2001/091 Student surveys of Gracedieu House and St John's College, Waterford
donor: Waterford Institute of Technology
- 2001/097 Copy survey drawings of Leixlip Lodge, county Kildare, and temple
and ice house at Castletown, county Kildare, by Hannigan
Whyte & Associates Architects, Leixlip, 1975
donor: Michael McCarthy
- 2001/098 Drawings (c.1870-c.1970, including drawings for Mary Immaculate
Church, Inchicore, and St Kevin's Church, Harrington St) and
photographs from the offices of Ashlin & Coleman Architects.
Also, album of around thirty original drawings of church archi-
tecture, Nuremburg, by A.W.N. Pugin, 1838 (Plates 4-6)
donor: Roger Coleman
- 2001/107 Drawings and related documents concerning Ardbraccan House,
county Meath
donor: Marion Cashman
- 2001/113 Various drawings of buildings in Leixlip / Lucan area
donor: Suzanne Pegley
- 2001/125 Drawings for alterations to Presentation Convent, Cashel, county
Tipperary, 1866-1904
donor: Kevin Porter
- 2001/136 Four plans for Royal City of Dublin Hospital, Baggot Street
on loan from Eastern Health Authority
- 2001/142 Mounted sample decorative schemes from the firm of H. Siphthorpe &
Co, Molesworth Street, Dublin
donor: John O'Connell
- 2001/143 Framed watercolour reconstruction of the Parthenon, Athens, by
Alfred Gresham Jones for which he was awarded a silver medal
by the RDS, 1843 or 1844. Also, note on the building and the
drawing by Alfred G. Jones, dated 1885
donor: Bill Johnson
- 2001/156 J.V. Downes student drawings (Plate 1)
Henry, Mullins & McMahon drawing for Clogher Palace, county
Tyrone (Plate 3)
Design for Wellington Monument, Dublin, attributed to Robert Smirke
Proposed railway bridge at Westmoreland Street, Dublin, by F. Barry,
1862 (Plate 7)
- 2001/169 Collection of drawings for Irish Distillers premises in Dublin, includ-
ing the Bow Lane distillery
donor: Irish Distillers



3 – Measured drawing of Clogher Place by Henry Mullins & MacMahon, 1820s
(acc. 2001/156)



4, 5, 6 – Pages from an album of drawings of church architecture in Nuremberg by A.W.N Pugin, 1838 (acc 2001/98)



Tabernacle S. Lawrence's Church Nuremberg.

MANUSCRIPTS

- 2001/016 Maurice Craig Collection
on loan from Maurice Craig
- 2001/017 Draft copy of MUBC thesis on Harcourt terrace by Clare Hogan
donor: Clare Hogan
- 2001/023 Notebook containing details of work carried out by James Sheridan of the Eagle Foundry, Dublin. The book deals with bells cast at the foundry, and provides details on location, number, metals used and tone, and also press notices of bells after installation (Plate 8)
on loan from Kit Sheridan
- 2001/050 Specifications and drawings for Presentation Convent and National School, Carrick on Suir, county Tipperary, by George C. Ashlin, 1881-82
- 2001/073 Niall Montgomery & Partners Collection
donor: James Montgomery
- 2001/084 Cantwell Collection
donor: Eileen Cantwell
- 2001/085 Research files for book on James Gandon compiled by Hugo Duffy
donor: Hugo Duffy

MAPS

- 2001/010 Reprint of Dublin Castle sheet of 1843 Dublin OS map
- 2001/059 Estate maps of Lucan Estate, Clonkeen, county Dublin (one showing old holdings and one showing rearranged holdings)
donor: Freddie O'Dwyer
- 2001/060 Congested District Board area map of Ireland (large and fragile)
on loan from Freddie O'Dwyer
- 2001/155 Set of bound six-inch OS maps for 26 counties of Ireland
Also selection of other maps
donor: Bord Fáilte

MODELS

- 2001/115 Early twentieth-century wooden scale model of Helen's Tower, Clandeboye, county Down. A tower was erected at Thiepval as

a memorial to Ulstermen who died in the Great War, based on William Burn's 1848 design for Helen's Tower (Plate 9).

donor: Desmond Guinness

OTHER

2001/015 *Historic Heart of Dublin*, video, 2000

donor: Historic Heart of Dublin

PAMPHLETS

2001/007 *Scéal Scoil Éanna: The story of an educational adventure*, Pat Cooke, Dublin 1986

2001/013 *Conservation Plans*, James Semple Kerr, 5th ed. (ANZUK), National Trust of Australia, Sydney 2000

donor: Heritage Council

2001/021 *Architectural appraisal and conservation assessment of 85 High Street, Kilkenny*



9 – Early twentieth-century model of Helen's Tower, Clandeboye, Co Down (acc. 2001/115)

Photographic survey and architectural assessment of 18-19 Duke Street and 8 Duke Lane, Dublin

Both reports prepared by Margaret Gowan & Co Ltd

donor: Margaret Gowna & Co Ltd

- 2001/025 *Sacred Places*, RIAI exhibition catalogue
- 2001/029 Building bye-laws for Dublin and Dun Laoghaire
Planning Acts 1934 and 1939
City of Dublin Pilot Scheme of Central Area Redevelopment, Nathaniel Lichfield et al
Urban Development Plans for the 1980s: guidelines for the preparation of statutory development plans, Dept of the Environment, 1983
donor: Edward Cassidy
- 2001/052 Pamphlet on Terenure
- 2001/062 Pamphlet on Cork architecture
donor: C.P. Hudson
- 2001/064 Dublin Corporation, *Guide to maintenance and alterations to listed buildings*, leaflets nos 1-8
donor: Edward Cassidy
- 2001/066 Leaflet on St Enda's Church, Johnstown, county Cork
donor: Simon Lincoln
- 2001/081 Printed copy of paper delivered to the Institute of British Decoration by John Siphthorpe on Dublin 18th-century decoration, March 1914
- 2001/093 Architectural history report on Corbalton Hall, county Meath
donor: Roger Hill
- 2001/094 Raheny Heritage Trail, 2000
donor: Flynn John Architects
- 2001/100 Guide to St Doulough's Church
- 2001/110 National Inventory of Architectural Heritage volumes for Roscommon, Roscrea, Sligo, Monaghan, Cavan, Castlebar and Carrick on Shannon
donor: Dúchas, The Heritage Service
- 2001/116 Copy of article on Delville, Glasnevin, county Dublin, by H. Elrington from *The Connoisseur*, October 1924
donor: Knight of Glin
- 2001/121 Guide book for Mount Stewart gardens
- 2001/134 Pamphlet on Georgian house and garden, Limerick
donor: Limerick Civic Trust

- 2001/137 Rory Murphy, *Battle of Newtownbarry*, Bunclody 1998
donor: Michael Cowman
- 2001/138 Commissioned house histories for Garrykennedy House, county Tipperary, and No. 45 Wellington Road, Dublin, produced by Eleclann Ltd
donor: Eleclann
- 2001/144 Report on eighteenth-century Irish gates and gatelodges prepared by John Redmill for George Mangan, 1999
donor: George Mangan
- 2001/149 Short history of St Cartha's RC church, Kilcar, county Donegal, by Catherine Campbell
donor: Catherine Campbell
- 2001/154 Historic building reports on Hollywood House and Cedarwood House, Mount Anville, Dublin, Gentian House, Galway, and No. 43 Eyre Square, Galway, by Robin Mandal
donor: Robin Mandal
- 2001/170 Mary Johnston, local history thesis on Bishop's Court, county Kildare
donor: Mary Johnston
- 2001/172 Collection of pamphlets on individual churches in Northern Ireland
donor: Dick Oram

PERIODICALS

- 2001/078 *Bulletin of the Institution of Civil Engineers*, c.1931-69 (duplicates)
donor: National Library of Ireland
- 2001/088 Run of *Old Kilkenny Review*, mid 1970s to 2001 (incomplete run)
donor: John Kirwan
- 2001/118 Run of *Journal of the Society of Architectural Historians*, 1950s to 1970s (also, cuttings relating to American architecture)
donor: Rory O'Cuive

PHOTOGRAPHS

- 2001/016 Maurice Craig Collection
on loan from Maurice Craig
- 2001/026 Colour photographs of Clochrity, county Carlow, by John Kirwan
donor: John Kirwan

- 2001/028 Collection of material relating to the Irish Sailors and Soldiers Land Trust and the Iveagh Trust, Dublin (photographs, negatives, copy drawings, reports, etc)
donor: F Aalen
- 2001/030 Copy photograph of Masonbrook, county Galway
donor: Gordon Mark
- 2001/040 Two albums of photographs and press cuttings relating to Charleville Castle and Tullamore, and Dublin city and southern suburbs
donor: Kevin Harrington
- 2001/049 Colour photographs (2) of stained-glass window, Farnaght church, Mohill, county Leitrim
donor: Petra Coffey
- 2001/051 Paddy Healy Collection
donor: Paddy Healy
- 2001/061 J.V. Downes Glass Lantern Slide Collection
donor: UCD Architecture Library
- 2001/064 Colour photographs of Dalkey, county Dublin (2), and Enniscorthy, county Wexford (7)
donor: Edward Cassidy
- 2001/077 Mangan Collection, copy photographs from the Mangan Biddluph photograph albums
donor: Offaly Historical Society
- 2001/083 Copy photographs of Church of Ireland College of Education, Kildare Place
donor: Church of Ireland College of Education
- 2001/105 Various photographic prints (ex coll. Edward Cassidy)
- 2001/108 Photographic prints by Richard Dann
donor: Richard Dann
- 2001/126 Photographs of St John's Church of Ireland, Sligo; tower, Shell Cottage and entrance front, Carton, county Kildare c.1870
- 2001/145 *Buildings of Ireland*, photographic negatives
on loan from Alistair Rowan
- 2001/159 Miscellaneous collection of reports, colour photographs and slides
donor: Cathal Crimmins
- 2001/161 c.1,000 photographs of buildings in N. Ireland by Kieran Glendinning
donor: Kieran Glendinning
- 2001/163 Photographs of designs for gates and gate lodges, Westport, county Mayo by Henry Holland and J.B. Papworth
donor: J.A.K. Dean

- 2001/166 Photographs of the Church of Our Lady of the Wayside, Kiltarnan, county Dublin, taken by the late Pat Johnston
donor: Mairead Johnston
- 2001/175 Copy of photograph of RDS Lecture Theatre (Dáil Chamber), Leinster House, under construction
donor: Mary Kellegher

PLANNING REPORTS

- 2001/047 Planning permission report on external improvements and refurbishment, No. 51 St Stephen's Green, Dublin 2
required deposit: Building Design Partnership (BDP)
- 2001/048 Additions and corrections to inventory of Loreto Abbey, Rathfarnham, Dublin 14 (to be inserted into original inventory ACC 2000/172)
required deposit: Frank Benson & Partners Architects
- 2001/056 Planning permission survey of proposed Dunnes Stores office and retail development, Upper Stephen Street / South Great George's Street, Dublin, by Arthur Gibney and Dublin Civic Trust
donor: Dublin Corporation
- 2001/070 Report on No. 3 Pim Street, Dublin 8, prepared by William Doran, architect, as a condition of planning permission
required deposit: Frank McGill
- 2001/071 Report on No. 47 Mount Pleasant Avenue Upr, Dublin 6, prepared by Gerrard Kennedy as a condition of planning permission
required deposit: Gerrard Kennedy Architect
- 2001/080 Architectural and historical report on No. 19 Temple Gardens, Rathmines, Dublin 6, prepared in accordance with planning permission decision by Bluett & O'Donoghue Architects, 14 Dec 2000
required deposit: Bluett & O'Donoghue Architects
- 2001/103 Planning permission report on GPO by Kavanagh Tuite Architects, 2001
required deposit: Kavanagh Tuite Architects
- 2001/131 Planning permission submission in relation to No. 60 Thomas Street, Dublin
required deposit: Holohan Architects
- 2001/139 Planning permission report on No. 28 Thomas Street, Dublin
required deposit: Cathal Crimmins